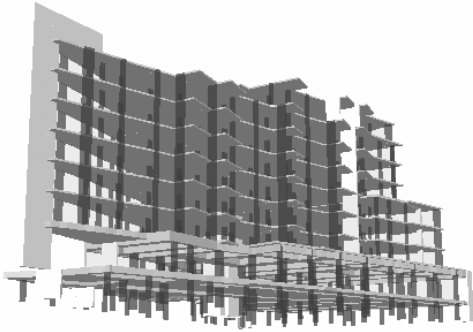


SEMINARS

3D MODELLING & USAGE OF R/C BUILDING AND SLABS SOFTWARE

Model courtesy of John Romanous + Assoc., NSW



We are pleased to invite you to upcoming seminars that will focus on detailed explanations of the most efficient techniques for modelling complex 3D building geometry.

Specific techniques for operating the powerful features contained in the **R/C Building** and **SLABS** software packages will be demonstrated (separate seminars for each software program), which in turn will result in models of increased accuracy and efficiency.

Specific topics for R/C Building and SLABS include: Sequence in creating models in relation to design efficiency, Smart DXF tools, Lateral Load input & Model Analysis, Exporting to SLABS & PT3D, Interpretation of results, IntelliMESH.

Professional Development:

Attendees may be credited towards IEAust Continuing Professional Development (CPD) requirements of 150 equivalent CPD hours required of members every 3 years.

Dates / Times:

- **Tuesday 12th December 2006: R/C Building:** 10am to 5pm (registration at 9.30am)
- **Wednesday 13th December 2006: SLABS:** 10am to 5pm (registration at 9.30am)

Reservation closing dates: 1 week prior to above seminar dates (limited numbers per seminar)

Venue: Hilton Brisbane - 190 Elizabeth St, Brisbane

Cost: Any 1 Seminar: \$660, Both Seminars: \$880 (inc. GST) per Attendant

Payment must be received in full by closing dates to guarantee places
Refreshments and lunch will be provided

See Over for Seminar Booking Details

POST TENSIONING DESIGN SEMINAR

We are pleased to invite you to a 2-day post tensioning design seminar. The seminar will review the basic theory and it will cover all design aspects relevant to a PT design job. These include: preliminary design, tendon layout, losses, transfer stresses, load balancing, punching shear, etc. For each design aspect the basic concept will be elaborated, and an illustrative example will be presented using the PT3D software. Note that this PT seminar is not limited to PT3D software usage. The primary focus of the seminar will be on the major aspects of PT design from theory to practical aspects rather than software usage.

Presenter: Jeff Lind (over 25 years of practical experience in PT design)

Course outline:

Day 1: - General Theory

- Structural systems and elements
- Design concepts / procedures

Day 2: - Brief PT3D software review

- Reinforcement Detailing
- Construction Topics
- Design Evaluation

Professional Development:

Attendees may be credited towards IEAust Continuing Professional Development (CPD) requirements of 150 equivalent CPD hours required of members every 3 years.

Dates: Thursday 14th & Friday 15th December 2006

Times: 9:30am to 5:00pm (registration at 9:00am both days)

Reservation closing dates: 1 week prior to above seminar dates (limited numbers per seminar)

Venue: Hilton Brisbane – 190 Elizabeth St, Brisbane

Cost: \$990 (inc. GST) per Attendant

Payment must be received in full by closing dates to guarantee places

Lunch and refreshments will be provided



PO Box A2293, Sydney South, NSW 1235
Tel: (02) 9267 0114 fax: (02) 9267 0168
Email: gocce@inducta.com.au web: www.inducta.com.au

✂
Organisation: _____

Name: _____

Telephone: _____ *Fax:* _____

(Please circle the relevant seminar(s) below & supply a separate copy of this form per Participant)

I would like to attend the Brisbane seminar(s); R/C Building | SLABS | PT Design

Please cut and attach this section with a cheque or money order payable to:

INDUCTA Engineering

PO Box A2293, Sydney South, NSW 1235, tel: (02) 9267-0114

Note: Reservations are confirmed once the full payment is received.